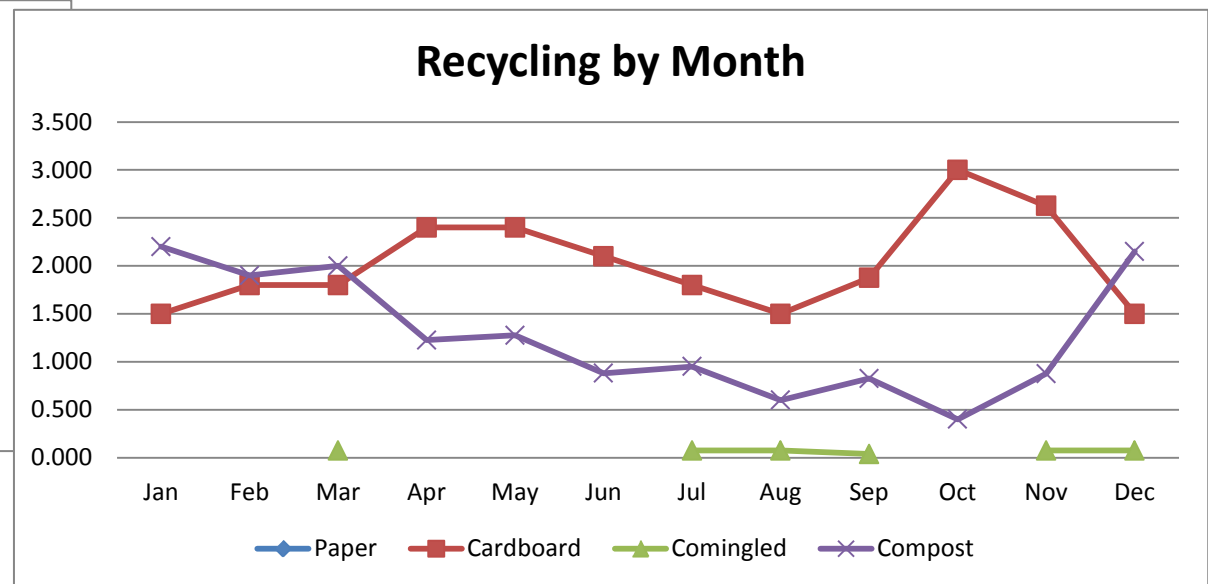
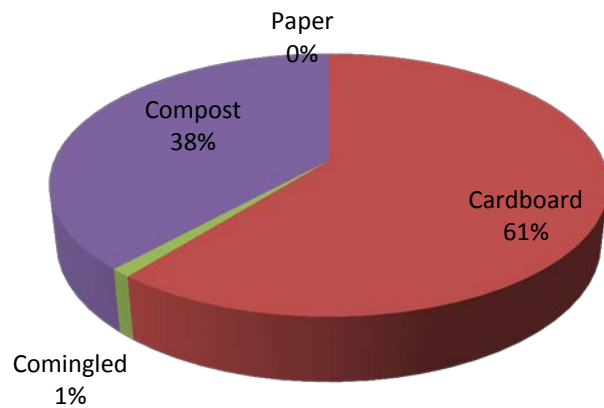


2012	Cardboard Recycling			Paper Recycling			Comingled Recycling			Composting			Total	
	# pickups	# of yards	Tons	# pickups	# of bins	Tons	# pickups	# of bins	Tons	# of pickups	Pounds	Tons	# of Pickups	Tons
Jan	5	40	1.500							3	4400	2.200	8	3.700
Feb	6	48	1.800							2	3800	1.900	8	3.700
Mar	6	48	1.800				1	2	0.075	2	4000	2.000	9	3.875
Apr	8	64	2.400							2	2450	1.225	10	3.625
May	8	64	2.400							2	2550	1.275	10	3.675
Jun	7	56	2.100							3	1760	0.880	10	2.980
Jul	6	48	1.800				1	2	0.075	2	1900	0.950	9	2.825
Aug	4	40	1.500				1	2	0.075	2	1200	0.600	7	2.175
Sep	5	50	1.875				1	1	0.038	2	1650	0.825	8	2.738
Oct	8	80	3.000							2	800	0.400	10	3.400
Nov	7	70	2.625				1	2	0.075	1	1750	0.875	9	3.575
Dec	4	40	1.500				1	2	0.075	2	4300	2.150	7	3.725
Total	74	648	24.300	0	0	0	6	11	0.413	25	30560	15.28	105	39.993



Recycling Summary

	Cardboard	Paper	Comingled	Composting	Total
	Tons	Tons	Tons	Tons	Tons
2008	15.90	0.53	0.15	3.40	19.98
2009	15.90	0.83	0.30	14.12	31.15
2010	15.90	0.75	0.34	15.80	32.78
2011	10.61	0.75	0.64	16.14	28.14
2012	24.300	0.000	0.413	15.280	39.993
					0.000
Total	82.613	2.85	1.839	64.73	152.031

