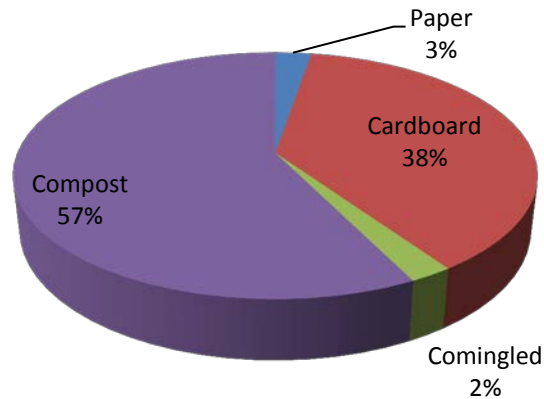
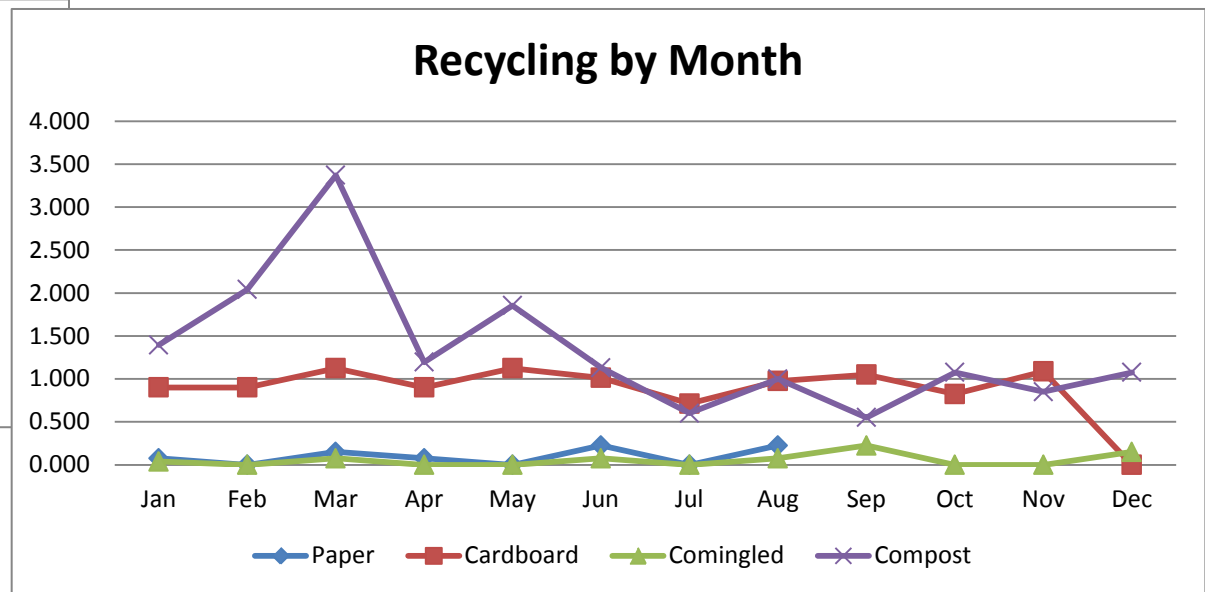


### Recycling Summary

2011	Cardboard Recycling			Paper Recycling			Comingled Recycling			Composting			Total	
	# pickups	# of yards	Tons	# pickups	# of bins	Tons	# pickups	# of bins	Tons	# of pickups	Pounds	Tons	# of Pickups	Tons
Jan	4	24	0.900	1	1	0.075	1	1	0.038	2	2790	1.395	8	2.408
Feb	4	24	0.900			0.000			0.000	2	4080	2.040	6	2.940
Mar	5	30	1.125	2	2	0.150	2	2	0.075	3	6740	3.370	12	4.720
Apr	4	24	0.900	1	1	0.075			0.000	2	2390	1.195	7	2.170
May	5	30	1.125			0.000			0.000	2	3710	1.855	7	2.980
Jun	4	27	1.013	2	3	0.225	1	2	0.075	2	2260	1.130	9	2.443
Jul	4	19	0.713			0.000			0.000	2	1200	0.600	6	1.313
Aug	4	26	0.975	1	3	0.225	1	2	0.075	3	2000	1.000	9	2.275
Sep	4	28	1.050				2	6	0.225	2	1100	0.550	8	1.825
Oct	4	22	0.825						0.000	3	2150	1.075	7	1.900
Nov	4	29	1.088						0.000	2	1700	0.850	6	1.938
Dec	4	32	0.000				1	4	0.150	2	2150	1.075	7	1.225
<b>Total</b>	<b>50</b>	<b>315</b>	<b>10.613</b>	<b>7</b>	<b>10</b>	<b>0.75</b>	<b>8</b>	<b>17</b>	<b>0.638</b>	<b>27</b>	<b>32270</b>	<b>16.135</b>	<b>92</b>	<b>28.135</b>



### Recycling by Month





From 1/1/2011 to 12/31/2011

## Boston Organics

Recycling Program with Save That Stuff has saved

<b>193</b> Adult Trees	<b>188</b> Cubic Yards of Landfill Space	<b>57,406</b> Kilowatts of Electricity or 34 Barrels of Oil
---------------------------	--	--

And reduced your Carbon Footprint by

**15.14 Metric Tons of Carbon Equivalent**

Which is equal to removing 4 Cars from the roadway each year



### Recycling Summary

	Cardboard	Paper	Comingled	Composting	Total
	Tons	Tons	Tons	Tons	Tons
2008	15.90	0.53	0.15	3.40	19.98
2009	15.90	0.83	0.30	14.12	31.15
2010	15.90	0.75	0.34	15.80	32.78
2011	10.61	0.75	0.64	16.14	28.14
					0.000
					0.000
<b>Total</b>	<b>58.313</b>	<b>2.85</b>	<b>1.426</b>	<b>49.45</b>	<b>112.038</b>

